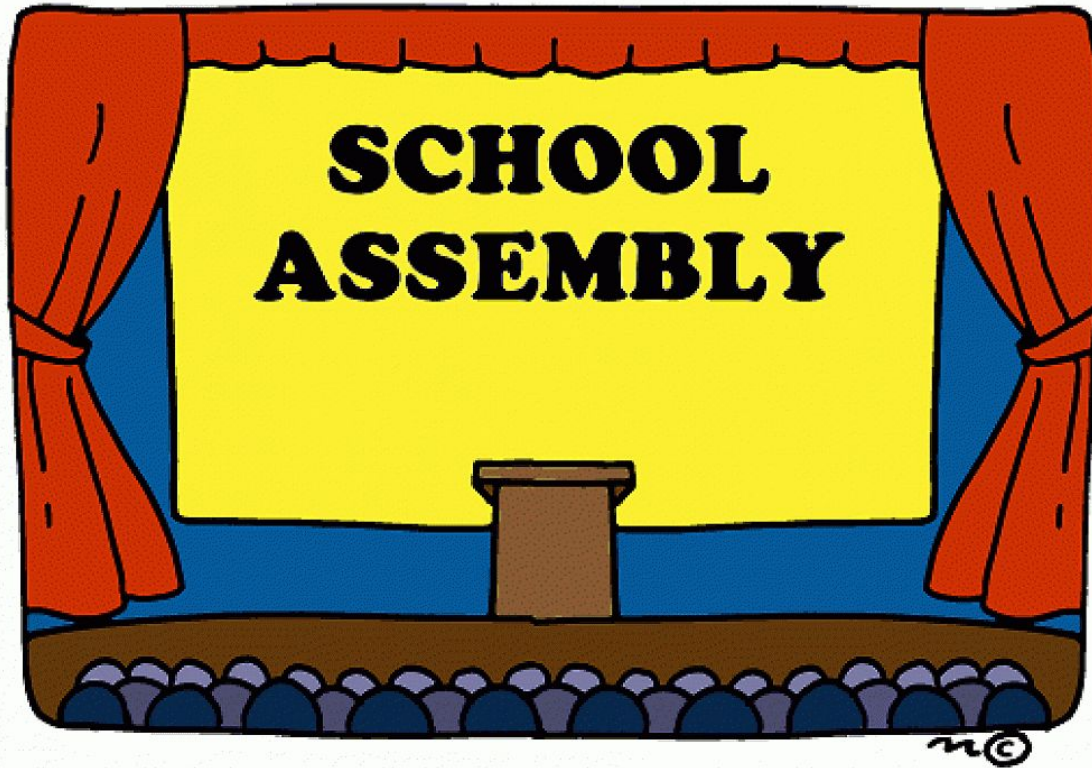


# Assembly Expectations



Positive Behavior Interventions & Supports (PBIS)

# School Expectations

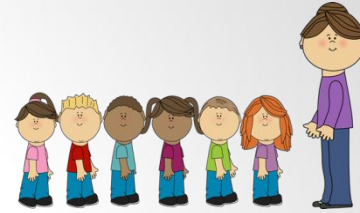
- **Be Safe**
  - To be careful and free of danger or harm
- **Be Respectful**
  - To treat others the way you would want to be treated
- **Be Responsible**
  - To behave in a way that allows others to trust you
  - To be accountable for your actions and materials



# HAZEL GOES COOK

Elementary School

An International Baccalaureate World School



# Assembly

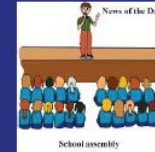
## BE SAFE

- Enter and exit quietly
- Keep hands and feet to yourself
- Sit on bottom with legs crossed
- Follow instructions given by adult supervision



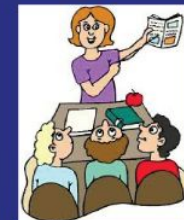
## BE RESPONSIBLE

- Follow adult directions
- Remain seated until you are dismissed
- Encourage others to follow the rules with kind words



## BE RESPECTFUL

- Focus on the speaker or presenter.
- Remain seated on your bottom
- Sit silently
- Clap softly



# Assembly Expectations

How can Cook Crusaders be **SAFE** during assemblies?

*Line Behavior*



☐ Enter the cafeteria quietly and in a straight line.



☐ Keep hands and feet to yourself.

☐ Sit on bottom with legs crossed.



☐ Listen carefully and follow instructions given by adult supervision

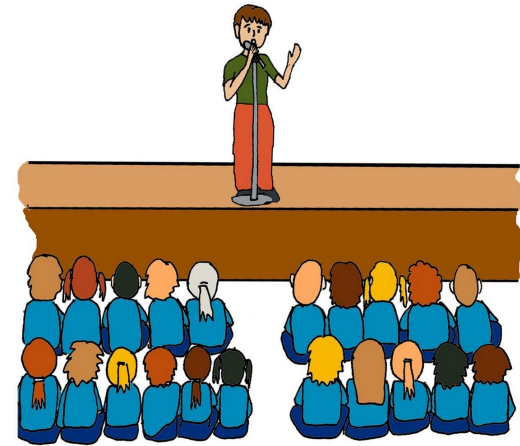
# Assembly Expectations

How can Cook Crusaders be **RESPONSIBLE** during assemblies?

☐ Face forward and listen to the person speaking.

☐ Remain seated until dismissed.

☐ Encourage others to follow directions with kind words.



*assembly*

# Assembly Expectations

How can Cook Crusaders be **RESPECTFUL** during assemblies?



□ Focus on the speaker or presenter.



□ Remain seated on your bottom.

□ Sit silently throughout the assembly.



□ Clap softly when it is time to cheer.

**Remember to always follow Cook's Assembly Behavior Expectations.**



# Assembly

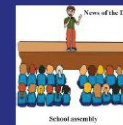
## BE SAFE

- Enter and exit quietly
- Keep hands and feet to yourself
- Sit on bottom with legs crossed
- Follow instructions given by adult supervision



## BE RESPONSIBLE

- Follow adult directions
- Remain seated until you are dismissed
- Encourage others to follow the rules with kind words



## BE RESPECTFUL

- Focus on the speaker or presenter.
- Remain seated on your bottom
- Sit silently
- Clap softly

