



HAZEL GOES COOK

Elementary School

An International Baccalaureate World School



Cafeteria and Lunch Table Expectations

School Expectations

- **Be Safe**
 - To be careful and free of danger or harm
- **Be Respectful**
 - To behave in a kind, courteous, and polite manner
 - To treat others the way you would want to be treated
- **Be Responsible**
 - To behave in a way that allows others to trust you
 - To be accountable for your actions and materials

CAFETERIA

BE SAFE

- Face forward in line
- Keep hands and feet to self
- Walk to lunch tables



BE RESPONSIBLE

- Take the food you touch
- Inform an adult of any accidents or spills
- Encourage others to follow the rules with kind words



BE RESPECTFUL

- Listen to all supervisors
- Say "please" and "thank you"
- Eat and talk quietly





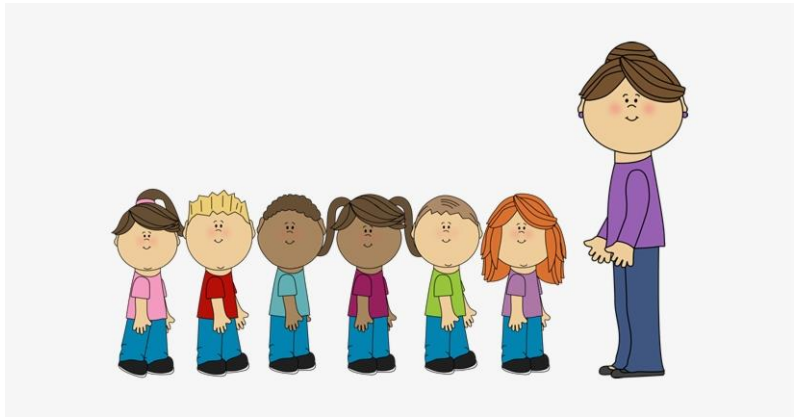
Be Safe

- Stay off the stairs, handrails, and stage



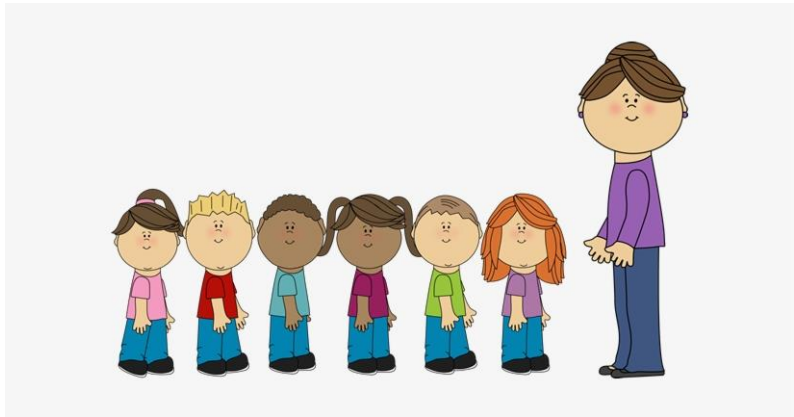
Be Responsible and Respectful

- Do not touch anything that does not belong to you.



Stand facing forward





Stand facing forward



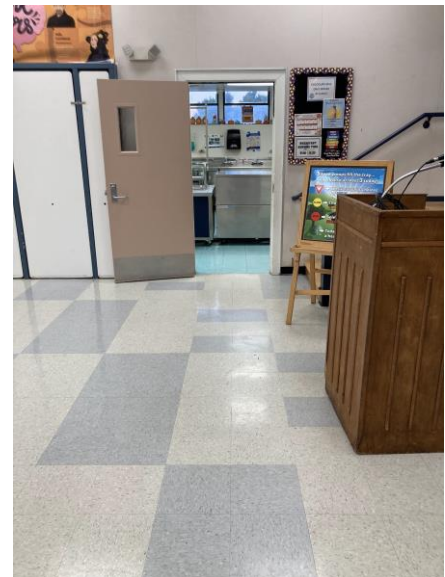
Use an Expected Voice Level



- Be respectful to others and their conversations by using a quiet voice.
- Be respectful to the classrooms around you by using a quieter voice.
- What voice level (0-5) do you think is expected in the lunch area?
- Be mindful of your language. Cursing and other hurtful language is not allowed.
 - Why is this the case?

Lunch Line

- ❑ Stand in a straight line as you are waiting to enter the cafeteria.
- ❑ Do not touch the handrails or go up on the stage.
- ❑ Follow the directions of our Cook Lunch workers.
- ❑ When you get you food, immediately walk to the lunch tables.



Lunch Tables

- Cook lunch tables are a place for you to eat a healthy meal, refuel our bodies and minds, and take a break from learning in the classroom.



Indoor lunch tables are used on cold or rainy days.

Walk at All Times

- ❑ Walk carefully in the lunch area
 - ❑ The lunch area is a small space with many students and tables that are close together. Students can easily hurt themselves or others if they run.
- ❑ Besides safety, what other school expectations does running through the lunch area break?
Why?

Lunch Tables

- Cook Elementary has FREE breakfast and lunch for all students.
- All students should eat a healthy breakfast and lunch each day.



- Chula Vista Elementary School District has a District Wellness Policy and ALL Cook Crusaders must follow by these expectations.

CVESD District Wellness Policy



- Students will not:
 - Eat candy at school or during school hours.
 - Chew gum at school or during school hours.
 - Eat Hot Cheetos, Takis, or any kind of unhealthy chips.
 - Eating food items high in sugar.



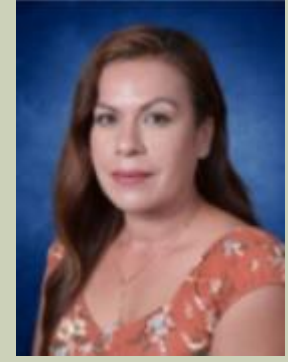
Recess and Lunch Supervisors



Ms. Yesica



Ms. Maria



Ms. Shannon

Ms. Michelle

- Students will always follow the expectations and directions from our Recess and Lunch Supervisors.



Cafeteria and Nutrition Staff



Ms. Araceli



Ms. Franchesca

- Students will always follow the rules and expectations for getting their lunch.
- Take food items that you are eating.
- Do not touch other food items.



Lunch Table Expectations



- Sit at your assigned table and face forward at all times.

- Sit in number line order.

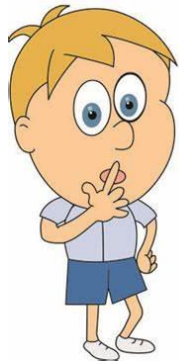


- Please raise your hand and do not stand up without asking for permission from a lunch supervisor.



- Eat all your food and do not share any items.

Lunch Table Expectations



s h h h h...

Quiet
Please

- Use a quiet voice and do not talk between tables.
- No Screaming or yelling.



- Do not play with your food.
- No throwing food or items.



- Throw away your trash and clean up after yourself.

Clean
the table.



Use an Expected Voice Level



- Be respectful to others and their conversations by using a quiet voice
- Be respectful to the classrooms around you by using a quieter voice
- What voice level (0-5) do you think is expected in the lunch area?
- Be mindful of your language. Cursing and other hurtful language is not allowed.
 - Why is this the case?

Clean Up Your Area

- ❑ Keep food off the floor
- ❑ Clean up all food that is near you
- ❑ Throw away all trash when you are done eating
- ❑ There should not be any bottles, wrappers, or food on the tables or on the ground after lunch.
- ❑ What consequences will students receive if they do not clean up their area?



Lunch Table Expectations



- When lunch time has ended. Listen to the lunch supervisor for lining up.
- Stand in number order and quietly until lunch supervisor directs students to walk to playground.



Lunch Area Expectations

Be Safe	Be Respectful	Be Responsible
Walk at all times	Listen to lunch supervisors	Clean up your area and throw all trash away
Keep your hands to yourself	Eat and talk quietly	Stay out of hallways
Give others room in the hallway when walking to and from the cafeteria	Respect the personal space of others	Take responsibility for your actions