



# HAZEL GOES COOK

Elementary School

An International Baccalaureate World School



## Cafeteria and Lunch Table Expectations

# School Expectations

- **Be Safe**

- To be careful and free of danger or harm

- **Be Respectful**

- To behave in a kind, courteous, and polite manner
- To treat others the way you would want to be treated

- **Be Responsible**

- To behave in a way that allows others to trust you
- To be accountable for your actions and materials

# CAFETERIA

## BE SAFE

- Face forward in line
- Keep hands and feet to self
- Walk to lunch tables



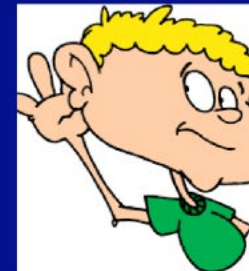
## BE RESPONSIBLE

- Take the food you touch
- Inform an adult of any accidents or spills
- Encourage others to follow the rules with kind words



## BE RESPECTFUL

- Listen to all supervisors
- Say "please" and "thank you"
- Eat and talk quietly





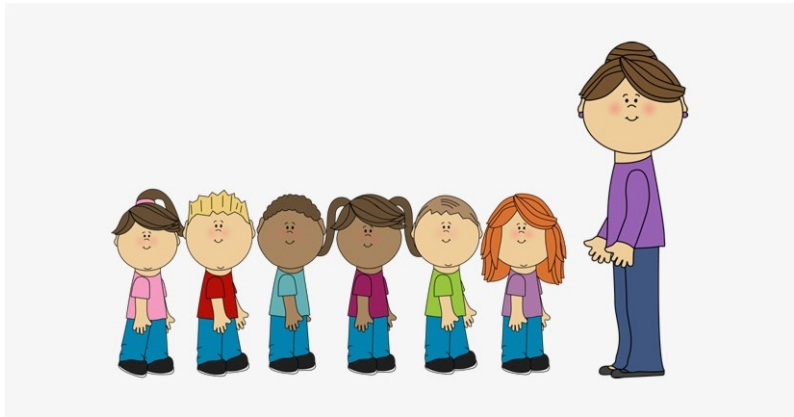
## Be Safe

- Stay off the stairs, handrails, and stage



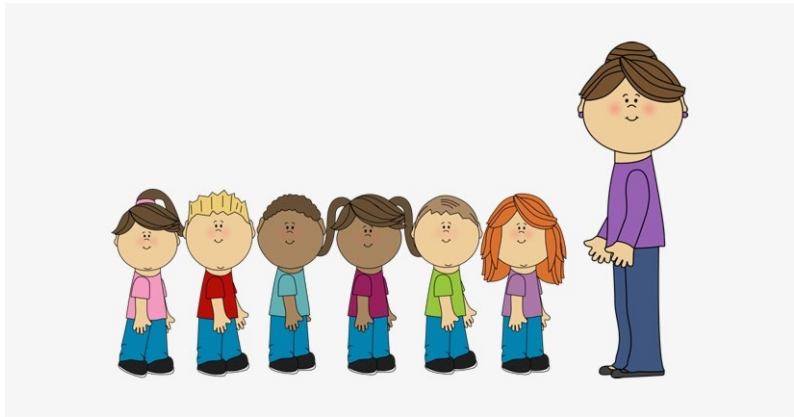
## Be Responsible and Respectful

- Do not touch anything that does not belong to you.



**Stand facing forward**





**Stand facing forward**



# Use an Expected Voice Level

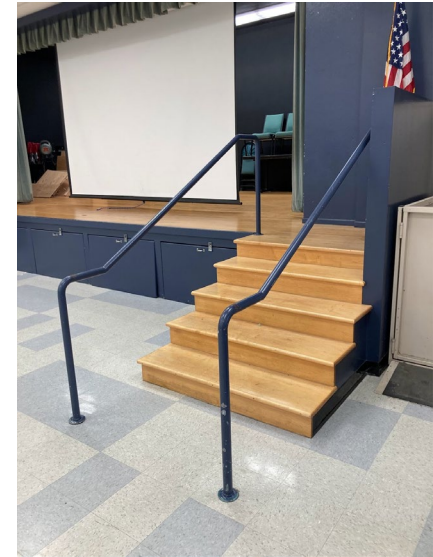


- Be respectful to others and their conversations by using a quiet voice.
- Be respectful to the classrooms around you by using a quieter voice.
- What voice level (0-5) do you think is expected in the lunch area?
- Be mindful of your language. Cursing and other hurtful language is not allowed.
  - Why is this the case?



# Lunch Line

- ❑ Stand in a straight line as you are waiting to enter the cafeteria.
- ❑ Do not touch the handrails or go up on the stage.
- ❑ Follow the directions of our Cook Lunch workers.
- ❑ When you get you food, immediately walk to the lunch tables.



# Lunch Tables

- Cook lunch tables are a place for you to eat a healthy meal, refuel our bodies and minds, and take a break from learning in the classroom.



Indoor lunch tables are used on cold or rainy days.

# Walk at All Times

- ❑ Walk carefully in the lunch area
  - ❑ The lunch area is a small space with many students and tables that are close together. Students can easily hurt themselves or others if they run.
- ❑ Besides safety, what other school expectations does running through the lunch area break?  
Why?

# Lunch Tables

- Cook Elementary has FREE breakfast and lunch for all students.
- All students should eat a healthy breakfast and lunch each day.

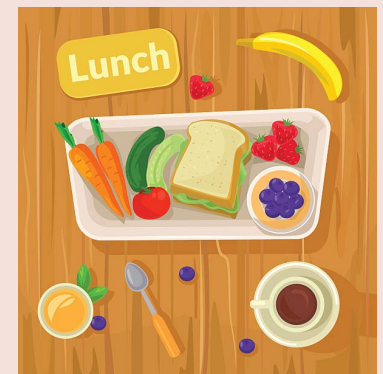


- Chula Vista Elementary School District has a District Wellness Policy and ALL Cook Crusaders must follow by these expectations.

# CVESD District Wellness Policy



- Students will not:
  - Eat candy at school or during school hours.
  - Chew gum at school or during school hours.
  - Eat Hot Cheetos, Takis, or any kind of unhealthy chips.
  - Eating food items high in sugar.



# Recess and Lunch Supervisors



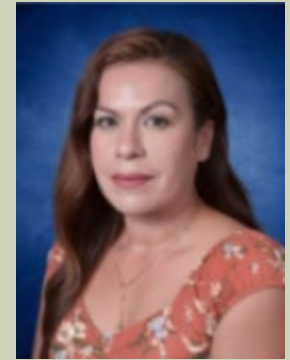
**Ms. Sofia**



**Ms. Maria**



**Ms. Shannon**



**Ms. Michelle**

- Students will always follow the expectations and directions from our Recess and Lunch Supervisors.



# Cafeteria and Nutrition Staff



**Ms. Araceli**



**Ms. Franchesca**

- Students will always follow the rules and expectations for getting their lunch.
- Take food items that you are eating.
- Do not touch other food items.



# Lunch Table Expectations



- Sit at your assigned table and face forward at all times.
- Sit in number line order.



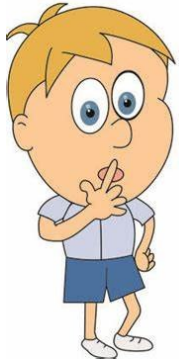
- Please raise your hand and do not stand up without asking for permission from a lunch supervisor.



- Eat all your food and do not share any items.



# Lunch Table Expectations



S h h h h...

Quiet  
Please

- Use a quiet voice and do not talk between tables.
- No Screaming or yelling.



- Do not play with your food.
- No throwing food or items.



- Throw away your trash and clean up after yourself.

Clean  
the table.



# Use an Expected Voice Level



- Be respectful to others and their conversations by using a quiet voice
- Be respectful to the classrooms around you by using a quieter voice
- What voice level (0-5) do you think is expected in the lunch area?
- Be mindful of your language. Cursing and other hurtful language is not allowed.
  - Why is this the case?

# Clean Up Your Area

- ❑ Keep food off the floor
- ❑ Clean up all food that is near you
- ❑ Throw away all trash when you are done eating
- ❑ There should not be any bottles, wrappers, or food on the tables or on the ground after lunch.
- ❑ What consequences will students receive if they do not clean up their area?



# Lunch Table Expectations



- When lunch time has ended. Listen to the lunch supervisor for lining up.
- Stand in number order and quietly until lunch supervisor directs students to walk to playground.



# Lunch Area Expectations

<b>Be Safe</b>	<b>Be Respectful</b>	<b>Be Responsible</b>
<b>Walk at all times</b>	<b>Listen to lunch supervisors</b>	<b>Clean up your area and throw all trash away</b>
<b>Keep your hands to yourself</b>	<b>Eat and talk quietly</b>	<b>Stay out of hallways</b>
<b>Give others room in the hallway when walking to and from the cafeteria</b>	<b>Respect the personal space of others</b>	<b>Take responsibility for your actions</b>